

m o o o i<sup>®</sup>



## Bart XL

---

by Moooi Works | Bart Schilder

Have you ever thought of bringing a touch of grandeur to your home, without conveying the firm austerity of real antiques?

---

<b>Designer</b>	Moooi Works
<b>Year of design</b>	2012
<b>Material</b>	Wooden frame covered in foam and dacron, the seat cushion is made in foam.

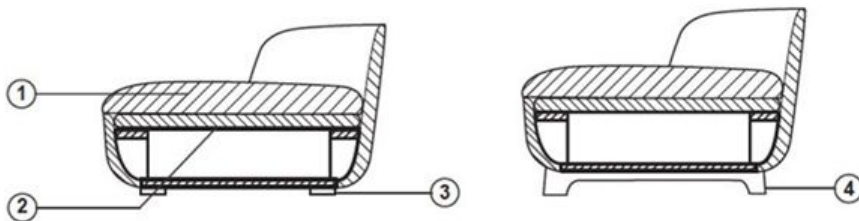
---

---

## technical

The Bart sofa is constructed from a wood frame covered in foam and dacron, the seat cushion is made in foam and removable.

Bart sofa is produced with removable covers for the seat cushion and all pillows (please check per category).



1. Multiple density fire retardant foam composition + dacron on wood frame
2. Elastic straps fixed on the wood base
3. Plastic glider feet
4. Solid wood legs (for Canape)

---

## Abbracci

### composition

100% pl

### abrasion

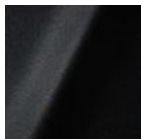
50.000 martindale

### lightfastness 4

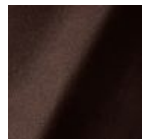
### firetest

FR BS5852 0/1

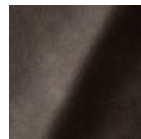
EN1021 I&2



Abbracci  
**Black**



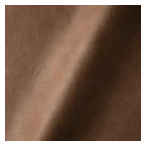
Abbracci  
**Brown**



Abbracci  
**Grey**



Abbracci  
**Oyster**



Abbracci  
**Taupe**

---

## Justo

### composition

15% CO, 35% PC, 10% PL, 40% VI

### abrasion

50.000 Martindale rubs, EN ISO 12947

### lightfastness

Note 5, EN ISO 105-B02

### fire test

EN 1021-1/2

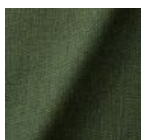
US. Cal. Bull. 117-2013

NFPA 260

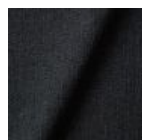
Upon request, with treatment:

BS5852 part I

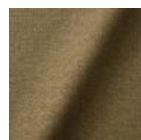
BS5852 crib5



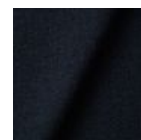
Justo  
**Alge**



Justo  
**Bazalt**



Justo  
**Bred**



Justo  
**Flod**

# m o o o i<sup>®</sup>



Justo  
**Hinde**



Justo  
**Lyse**



Justo  
**Muse**



Justo  
**Nat**



Justo  
**Sennep**



Justo  
**Sten**

---

## Liscio

### composition

35% WO / 35% CV / 21% CO / 9% PA

### abrasion

30.000 Martindale

### lightfastness

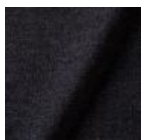
4-6

### firetest

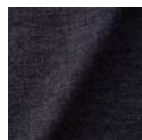
US. Cal. Bull. 117-2013

Upon request, with treatment:

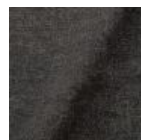
BS5852 part I



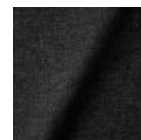
Liscio  
**Grigio Blu  
Scuro**



Liscio  
**Grigio Blu**



Liscio  
**Grigio Scuro**



Liscio  
**Muscio Scuro**



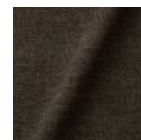
Liscio  
**Muscio**



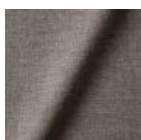
Liscio  
**Argento**



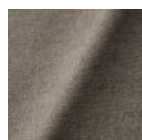
**Liscio**  
Nebbia



Liscio  
**Pietra**



Liscio  
**Perla**



Liscio  
**Latte Scuro**



Liscio  
**Latte**

---

## Vesper

# m o o o i<sup>®</sup>

**composition**

10% CO, 40% L, 10% PA, 10% PL, 30% VI

**abrasion**

40.000 Martindale rubs, EN ISO 12947

**lightfastness**

Note 5, EN ISO 105-B02

**firetest**

EN 1021-1/2

US. Cal. Bull. 117-2013

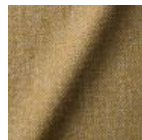
Upon request, with treatment:

BS5852 part 1

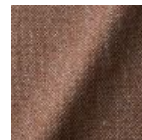
BS5852 crib 5



Vesper  
**Aluminium**



Vesper  
**Brass**



Vesper  
**Bronze**



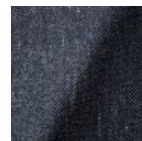
Vesper  
**Carbon**



Vesper  
**Nickel**



Vesper  
**Silver**



Vesper  
**Steel**



Vesper  
**Titan**

## Summit Melange

**composition**

20% WO / 5% PA / 15% PES  
60% PES filling

**abrasion**

50.000 martindale

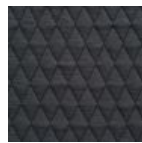
**lightfastness 6**

**firetest**

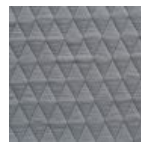
EN1021-1/2  
US. Cal. Bull. 117-2013  
BS5852 part1  
DIN 4102-B2



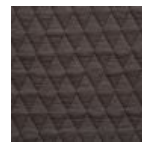
Summit Melange  
**Flour**



Summit Melange  
**Slate**



Summit Melange  
**Dust**



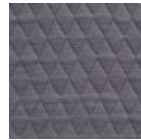
Summit Melange  
**Peat**



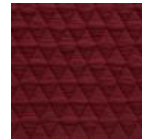
Summit Melange  
**Twig**



Summit Melange  
**Lagoon**



Summit Melange  
**Lavender**



Summit Melange  
**Chili**

## Summit UNI

**composition**

22% wo, 2% pa, 14% pl, 62% pl filling

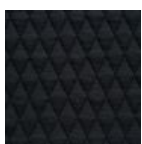
**abrasion**

50.000 martindale

**lightfastness 5**

**firetest**

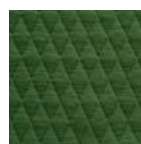
EN1021 1&2



Summit UNI  
**Caviar**



Summit UNI  
**Graphite**



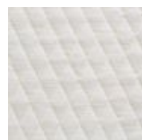
Summit UNI  
**Grass**



Summit UNI  
**Grey**



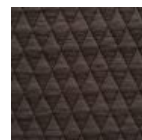
Summit UNI  
**Linen**



Summit UNI  
**Natural**



Summit UNI  
**Passion**



Summit UNI  
**Walnut**

m o o o i<sup>®</sup>

## Trickle

**composition**

60% WO / 20% PES / 20% PA

**abrasion**

80.000 martindale

**lightfastness 6**

**firetest**

EN1021-1/2

US. Cal. Bull. 117-2013

BS5852 part1

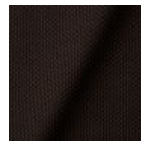
DIN 4102-B2



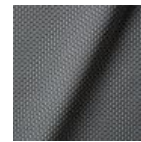
Trickle  
**Flour**



Trickle  
**Twig**



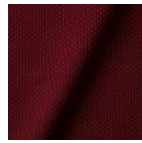
Trickle  
**Peat**



Trickle  
**Dust**



**Trickle**  
Slate



Trickle  
**Chili**



Trickle  
**Lavender**



Trickle  
**Lagoon**

## Twill

**composition**

72% wo, 8% pa, 20% pl

**abrasion**

75.000 martindale

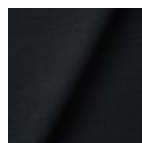
**lightfastness 5**

**firetest**

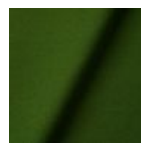
EN1021 I&2



Twill  
**Caviar**



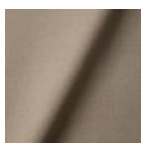
Twill  
**Graphite**



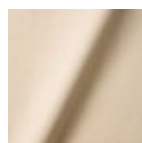
Twill  
**Grass**



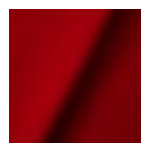
Twill  
**Grey**



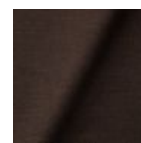
Twill  
**Linen**



Twill  
**Natural**



Twill  
**Passion**



Twill  
**Walnut**



## Twill Melange

**composition**

60% WO / 20% PES / 20% PA

**abrasion**

80.000 martindale

**lightfastness** 6-7

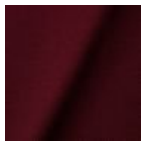
**firetest**

EN1021-1/2

US. Cal. Bull. 117-2013

BS5852 part1

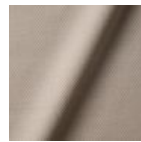
DIN 4102-B2



Twill Melange  
**Chili**



Twill Melange  
**Dust**



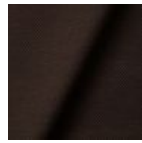
Twill Melange  
**Flour**



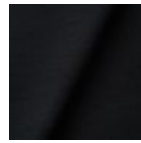
Twill Melange  
**Lagoon**



Twill Melange  
**Lavender**



Twill Melange  
**Peat**



Twill Melange  
**Slate**



Twill Melange  
**Twig**

## Twill Summit Uni Composition

**composition**

Twill: 72% wo, 8% pa, 20% pl

Summit UNI: 22% wo, 2% pa, 14% pl, 62% pl filling

**abrasion**

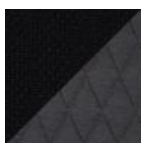
Twill: 75.000 martindale

Summit Uni: 50.000 martindale

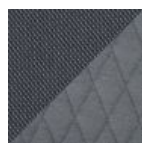
**lightfastness** 5

**firetest**

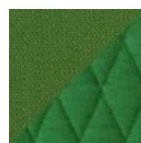
EN1021 1&2



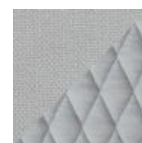
Caviar



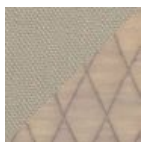
Graphite



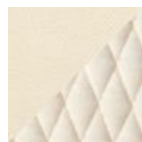
Grass



Grey



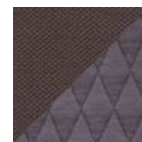
Linen



Natural



Passion



Walnut

m o o o i<sup>®</sup>

---

## Solis

### composition

2% PA 3% PC 30% PL 65% WO

### abrasion

40.000 Martindale rubs, EN ISO 12947

### lightfastness

Note 5, EN ISO 105-B02

### firetest

EN 1021-1/2

US. Cal. Bull. 117-2013

Upon request, with treatment:

BS5852 part I

BS5852 crib5



Solis  
Crust



Solis  
**Dawn**



Solis  
**Fog**



Solis  
**Gray**



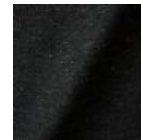
Solis  
**Paper**



Solis  
**Rain**



Solis  
**Spencer**



Solis  
**Suit**



Solis  
**Sunset**

---

## Velour

### composition

77% wo, 8% pa, 15% pl

### abrasion

100.000 martindale

### lightfastness 7

### firetest

FR BS5852 0/1

EN1021 1&2

m o o o i<sup>®</sup>



Velour  
**Coral**



Velour  
**Stone**



Velour  
**Moss**

---

## Arredo Leather

### composition

100% semi aniline leather

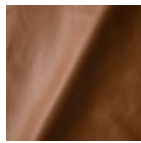
Leather is a natural product, colours may vary from hide to hide.

### firetest

EN1021 I&2



Arredo Leather  
**Black**



Arredo Leather  
**Brown**



Arredo Leather  
**White**

---

## Cervino Leather

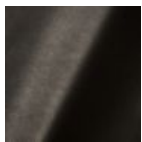
### composition

100% aniline leather

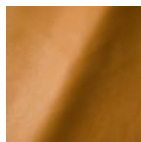
Leather is a natural product, colours may vary from hide to hide.

### firetest

EN1021 I&2



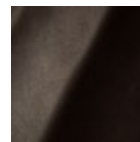
Cervino Leather  
**Anthracite**



Cervino Leather  
**Cognac**



Cervino Leather  
**Mud**



Cervino Leather  
**Pure**

---

## Extinct Animal Collection - Dodo Pavone

### composition

12% CO 88% PL

### abrasion

40.000 Martindale rubs, EN ISO 12947

### lightfastness

Note 5, EN ISO 105-B02

### firetest

US. Cal. Bull. 117-2013

Upon request, with treatment:

BS5852 part I

# m o o o i<sup>®</sup>



---

## **Kvadrat Fabrics**

### **Kvadrat Fabrics**

Selected Moooi products can be upholstered with a collection of Kvadrat fabrics. Kvadrat designs high-quality upholstery, in an extensive range of colours and textures.

Go to our [Kvadrat fabrics page](#) for a full overview of all fabric families you can choose from.



## packaging

Bart Sofa, Daybed & Canape:

H 105 cm | 41.3"  
W 250 cm | 98.4"  
D 72 cm | 28.3"

Colli I

With packaging:  
89 KG | 196 lb

Bart Sofa XL:

H 116 cm | 45.7"  
W 306 cm | 120.5"  
D 66 cm | 26.0"

Colli I

With packaging:  
110 KG | 243 lb

Bart Armchair, Bart Canape  
Armchair:

H 102 cm | 40.2"  
W 104 cm | 40.9"  
D 63 cm | 24.8"

Colli I

KG | lb  
With packaging:  
39 KG | 86 lb

## dimensions

