

m o o o i<sup>®</sup>



## The Golden Chair

---

The Golden Chair, designed by Nika Zupanc for Moooi, is available in a Glossy Golden, Matt Golden and Black on Black composition. It's elegant, retro-looking base can also be dressed in a selection of fabrics to match different interiors.

---

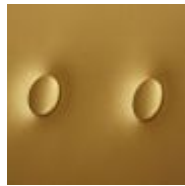
<b>Designer</b>	Nika Zupanc
<b>Year of design</b>	2013
<b>Material</b>	Gold chromed steel frame, Gold synthetic leather

## colours

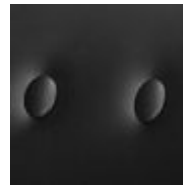
Please note that there is a matt version available that has a higher martindale of 40.000, which is an advantage when using the chair in larger projects.



Gold  
100% skai®  
leather  
20.000 martindale  
*(not available in the UK)*



Matt gold | for project use  
100% skai®  
leather  
>200.000 martindale  
BS 5852 source 0&1



Black  
100% skai®  
leather  
>50.000 Martindale  
EN1021-1/2  
BS5852 part I  
DIN 4102-B2  
NF M2

## Macchedil, Grezzo

### composition

47% co, 20% vi, 18% pi, 8% li, 5% pc, 2% af

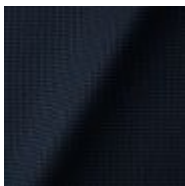
### abrasion

18.000 martindale

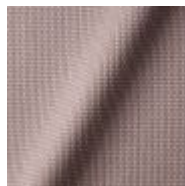
### lightfastness 4

### firetest

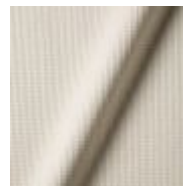
EN1021 I&2



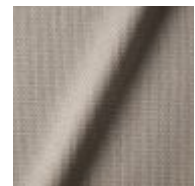
Macchedil Grezzo  
**Black indigo**



Macchedil Grezzo  
**Pinkish**



Macchedil Grezzo  
**Off white**



Macchedil Grezzo  
**Light grey**

# m o o o i<sup>®</sup>



Macchedil Grezzo  
**Light brown**



Macchedil Grezzo  
**Grey grey**



Macchedil Grezzo  
**Anthracite**



Macchedil Grezzo  
**Blue grey**



Macchedil Grezzo  
**Cappuccino**



Macchedil Grezzo  
**Deepblue**

---

## Macchedil, Sottile

### composition

49% vi, 24% pl, 21% li, 6% co

### abrasion

30.000 martindale

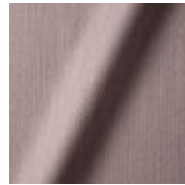
### lightfastness 4

### firetest

EN1021 I&2



Macchedil Sottile  
**Black indigo**



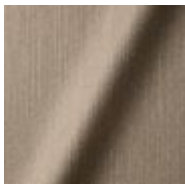
Macchedil Sottile  
**Pinkish**



Macchedil Sottile  
**Off white**



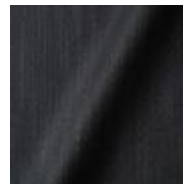
Macchedil Sottile  
**Light grey**



Macchedil Sottile  
**Light brown**



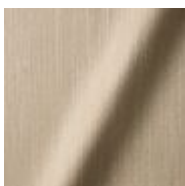
Macchedil Sottile  
**Grey grey**



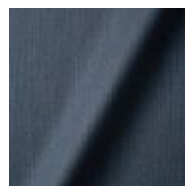
Macchedil Sottile  
**Anthracite**



Macchedil Sottile  
**Blue grey**



Macchedil Sottile  
**Cappuccino**



Macchedil Sottile  
**Deep blue**

# m o o o i<sup>®</sup>

---

## Abbracci

**composition**

100% pl

**abrasion**

50.000 martindale

**lightfastness 4**

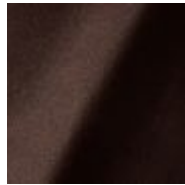
**firetest**

FR BS5852 0/1

EN1021 I&2



Abbracci  
**Black**



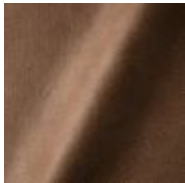
Abbracci  
**Brown**



Abbracci  
**Grey**



Abbracci  
**Oyster**



Abbracci  
**Taupe**

---

## Oray

**composition**

8% co, 38% vi, 15% pl, 39% li

**abrasion**

30.000 martindale

**lightfastness 4**

**firetest**

FR BS5852 0/1

EN 1021 I&2

# m o o o i<sup>®</sup>



Oray  
**Cream**



Oray  
**Sand**



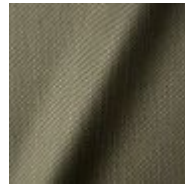
Oray  
**Rock**



Oray  
**Mineral**



Oray  
**Gravel**



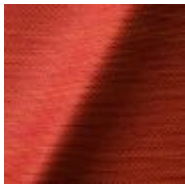
Oray  
**Dark Gull**



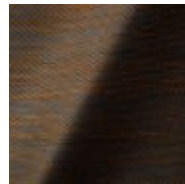
Oray  
**Copper**



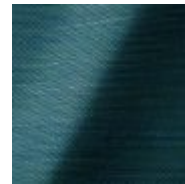
Oray  
**Rust**



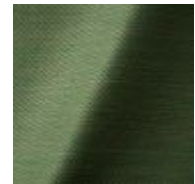
Oray  
**Flamboyant**



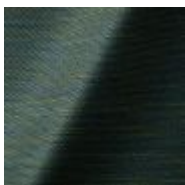
Oray  
**Oil**



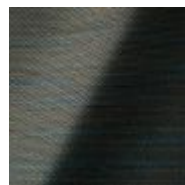
Oray  
**Aqua**



Oray  
**Peyote**



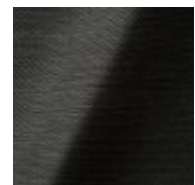
Oray  
**Ocean**



Oray  
**Metal**



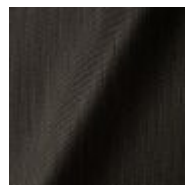
Oray  
**Griffin**



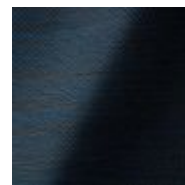
Oray  
**Dusk**



Oray  
**Chestnut**



Oray  
**Dark**



Oray  
**Indigo**



Oray  
**Ochre**

## Jacquard andaz

**composition:**

34% cotton - 30% viscose - 24% linen - 12% polyamide

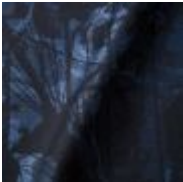
**abrasion:**

25000 martindale

**lightfastness** 4-5

**firetest:**

BS EN 1021 I&2



Jacquard  
**Andaz**

---

## Jaquard Fresco

**composition**

40% vi ,36% co,14% pl, 10% li

**abrasion**

20.000> martindale

**lightfastness** 4-5

**firetest**

EN1021 I&2



Jaquard  
**Fresco**

---

m o o o i<sup>®</sup>

## Jacquard Old Black & Blue

### composition

52% vi, 38% co, 10% li

### abrasion

20.000> martindale

### lightfastness 4-5

### firetest

EN1021 1&2



Jacquard  
**Old Blue**



Jacquard  
**Old Black**

---

## Justo

### composition

15% CO, 35% PC, 10% PL, 40% VI

### abrasion

50.000 Martindale rubs, EN ISO 12947

### lightfastness

Note 5, EN ISO 105-B02

### fire test

EN 1021-1/2

US. Cal. Bull. 117-2013

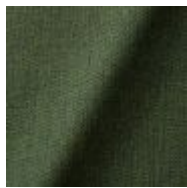
NFPA 260

Upon request, with treatment:

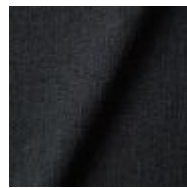
BS5852 part1

BS5852 crib5

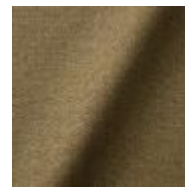
# m o o o i<sup>®</sup>



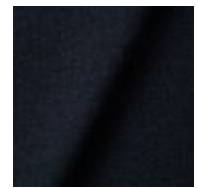
Justo  
**Alge**



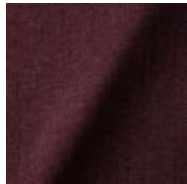
Justo  
**Bazalt**



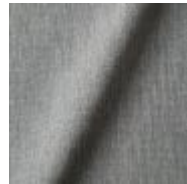
Justo  
**Bred**



Justo  
**Flod**



Justo  
**Hinde**



Justo  
**Lyse**



Justo  
**Muse**



Justo  
**Nat**



Justo  
**Sennep**



Justo  
**Sten**

---

## Liscio

### composition

35% WO / 35% CV / 21% CO / 9% PA

### abrasion

30.000 Martindale

### lightfastness

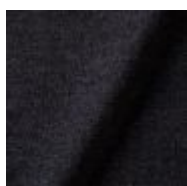
4-6

### firetest

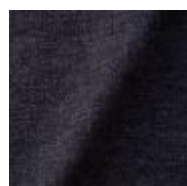
US. Cal. Bull. 117-2013

Upon request, with treatment:

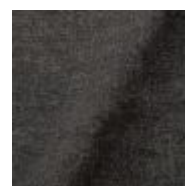
BS5852 part I



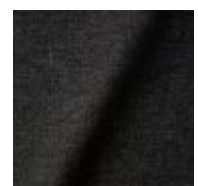
Liscio  
**Grigio Blu  
Scuro**



Liscio  
**Grigio Blu**



Liscio  
**Grigio Scuro**



Liscio  
**Muscio Scuro**



# m o o o i<sup>®</sup>



Liscio  
**Muscio**



Liscio  
**Argento**



**Liscio**  
Nebbia



Liscio  
**Pietra**



Liscio  
**Perla**



Liscio  
**Latte Scuro**



Liscio  
**Latte**

---

## Twill

### composition

72% wo, 8% pa, 20% pl

### abrasion

75.000 martindale

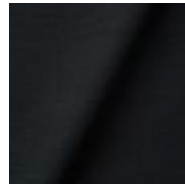
### lightfastness 5

### firetest

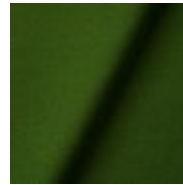
EN1021 I&2



Twill  
**Caviar**



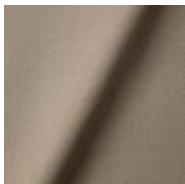
Twill  
**Graphite**



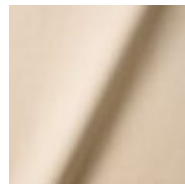
Twill  
**Grass**



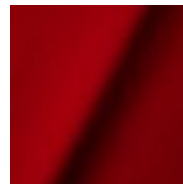
Twill  
**Grey**



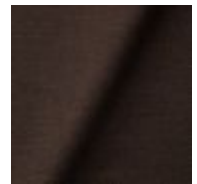
Twill  
**Linen**



Twill  
**Natural**



Twill  
**Passion**



Twill  
**Walnut**

m o o o i<sup>®</sup>

## Twill Melange

**composition**

60% WO / 20% PES / 20% PA

**abrasion**

80.000 martindale

**lightfastness 6-7**

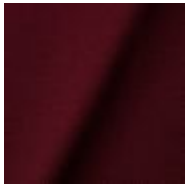
**firetest**

EN1021-1/2

US. Cal. Bull. 117-2013

BS5852 part1

DIN 4102-B2



Twill Melange  
**Chili**



Twill Melange  
**Dust**



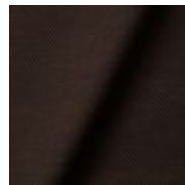
Twill Melange  
**Flour**



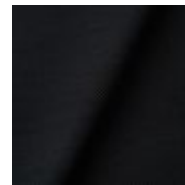
Twill Melange  
**Lagoon**



Twill Melange  
**Lavender**



Twill Melange  
**Peat**



Twill Melange  
**Slate**



Twill Melange  
**Twig**

m o o o i<sup>®</sup>

## Trickle

### composition

60% WO / 20% PES / 20% PA

### abrasion

80.000 martindale

### lightfastness 6

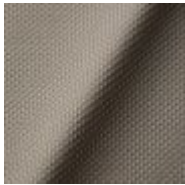
### firetest

EN1021-1/2

US. Cal. Bull. 117-2013

BS5852 part1

DIN 4102-B2



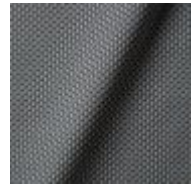
Trickle  
**Flour**



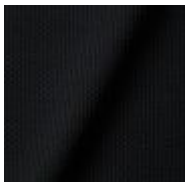
Trickle  
**Twig**



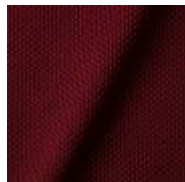
Trickle  
**Peat**



Trickle  
**Dust**



**Trickle**  
Slate



Trickle  
**Chili**



Trickle  
**Lavender**



Trickle  
**Lagoon**

## Velour

### composition

77% wo, 8% pa, 15% pl

### abrasion

100.000 martindale

### lightfastness 7

### firetest

FR BS5852 0/1

EN1021 I&2



Velour  
**Coral**



Velour  
**Stone**



Velour  
**Moss**

---

## Kvadrat Fabrics

### Kvadrat Fabrics

Selected Moooi products can be upholstered with a collection of Kvadrat fabrics. Kvadrat designs high-quality upholstery, in an extensive range of colours and textures.

Go to our Kvadrat fabrics page for a full overview of all fabric families you can choose from.

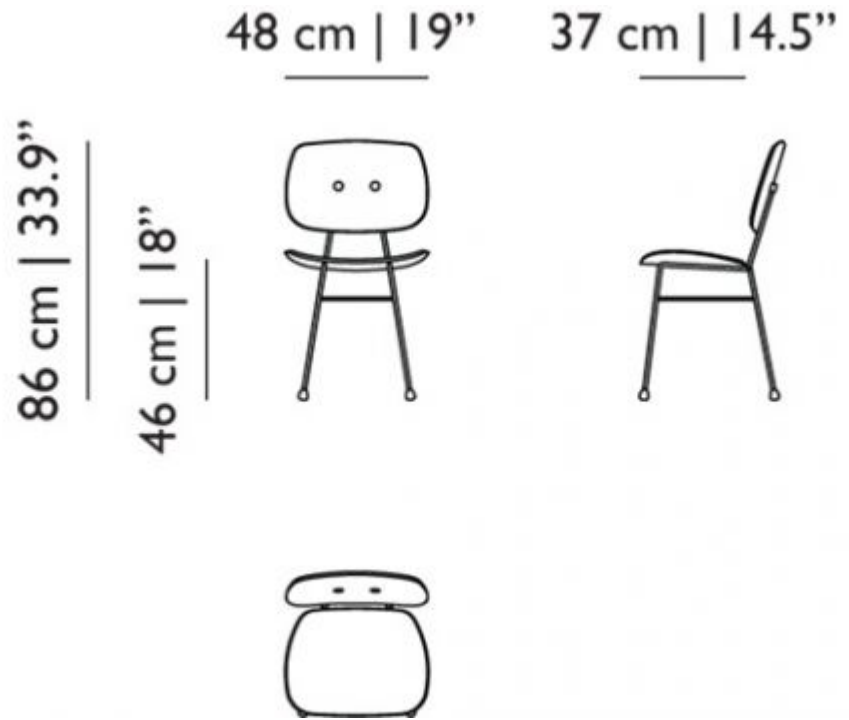


Image not found or type unknown

---

# m o o o i<sup>®</sup>

## dimensions



## cleaning instructions

Moooi recommends using a good furniture polish and a soft cloth. Apply generously in layers to the surface and use the cloth to shine. Do not use abrasive fabrics, gently remove tough stains with warm water and a trusted multi-surface cleaner.

m o o o i<sup>®</sup>

## packaging

H 51 cm | 20,1"

W 49 cm | 19,3"

D 90 cm | 35,4"

Colli 1/1

Product weight:

9 KG | 19,8 lb

With packaging:

10,5 KG | 23,1 lb

---

## Bearded leopard Jacquard

### composition

77% VI / 15% PES / 7% CO / 1% PA

### abrasion

15.000 Martindale rubs, EN ISO 12947

### lightfastness

Note 4-6, EN ISO 105-B02

### firetest

EN1021-1/2

Upon request and with treatment:

BS5852 part I

m o o o i<sup>®</sup>



---

## Blushing Sloth Woolly Mohair

### composition

85% WV / 15% WM

### abrasion

15.000 Martindale rubs, EN ISO 12947

### lightfastness

Note 4-6, EN ISO 105-B02

### firetest

EN1021-1/2

BS5852 part1



**Extinct  
Animals  
Fabric  
Collection**

Blushing Sloth  
Woolly Mohair

m o o o i<sup>®</sup>

## Calligraphy Bird Jacquard

### composition

64% VI, 21% PES, 15% CO

### abrasion

50.000 Martindale rubs, EN ISO 12947

### lightfastness

Note 4-6, EN ISO 105-B02

### firetest

Upon request, with treatment;  
BS5852 part I



Extinct Animals  
Fabric Collection  
Calligraphy Bird  
Jacquard

---

## The Menagerie of Extinct Animals

### composition

100% PES

### abrasion

50.000 Martindale rubs, EN ISO 12947

### lightfastness

Note 4-6, EN ISO 105-B02

### firetest

EN 1021-1/2  
Upon request, with treatment;  
BS5852 part I



m o o o i<sup>®</sup>

## Flying Coral Fish Scaled



**Extinct  
Animals  
Fabric  
Collection**

Flying Coral Fish  
Scaled

**Type**  
Pure aniline,  
nubuck finish

---

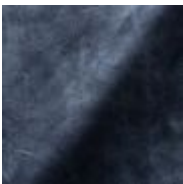
## Dwarf Rhino Buffed

**composition**

100% steer

**Type**

Pure aniline, nubuck finish

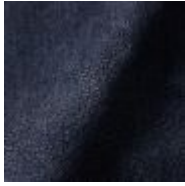


Extinct Animals  
Fabric Collection  
Dwarf Rhino  
Buffed

---

## Dwarf Rhino Crackle

m o o o i<sup>®</sup>



**Extinct  
Animals  
Fabric  
Collection**  
Dwarf Rhino  
Crackle

---

## Armoured Boar Crackle

**composition**

100% cow hide

**Type of leather**

Pure aniline, nubuck finish



---

## Armoured Boar Hairy

**composition**

100% cow skin

**lightfastness**

>3, ISO 105-B02:2004

